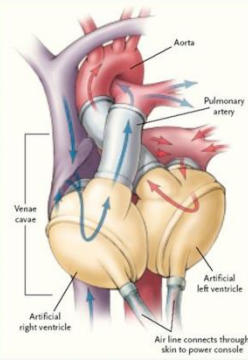
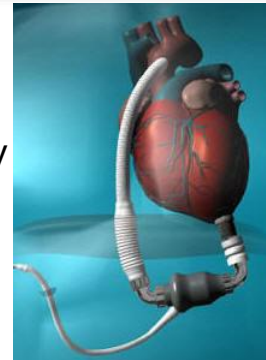


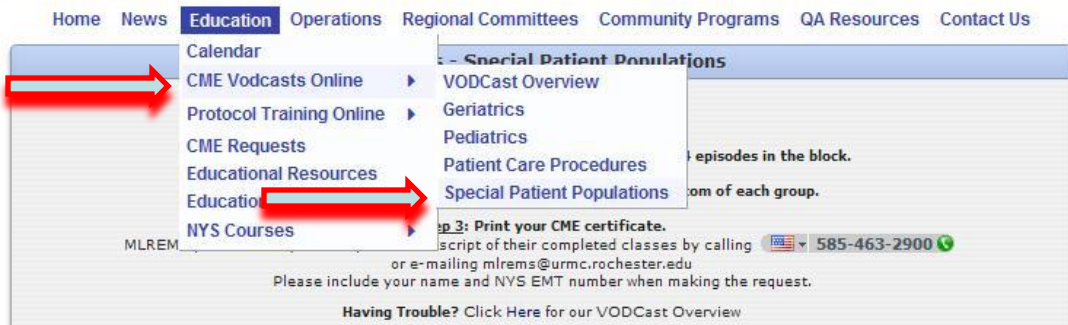
EMERGENCY MEDICAL PROVIDER ON LINE LVAD EDUCATION

Left Ventricular Assist Devices (LVADs) and the SynCardia temporary Total Artificial Heart (TAH) are heart pumps used for the treatment of advanced heart failure. These patients have altered physiology and a dependence on power that will impact their care in emergency situations. The emergency responder assessment and potential interventions for LVAD patients do not apply to TAH patients. Vodcasts are available and specific to each pump.



On line CME LVAD and TAH education is available from www.mlrems.org

Click :Education → CME Vodcasts → Special Patient Populations



Click streaming or download for each of the four videos and complete the test for CME credit. Videos may be saved for use at a latter time.

July 2016

MEDICINE of THE HIGHEST ORDER



UNIVERSITY of
ROCHESTER
MEDICAL CENTER